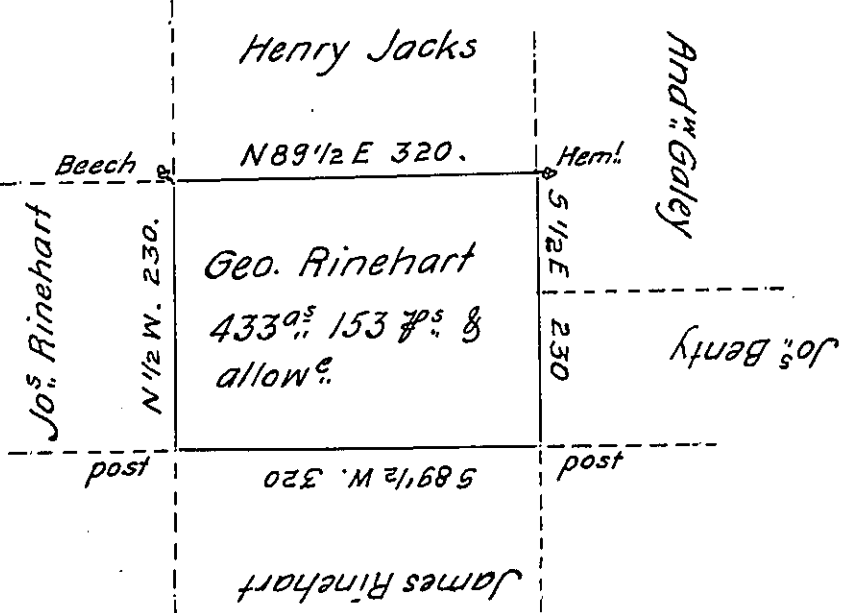


AP-3-107

C-188-187



A Draught of a tract of land called \_\_\_\_\_ Situate in the County of Luzerne, Adjoining James Rinehart & others surveyed the 17<sup>th</sup> day of Novem<sup>r</sup> 1792. for George Rinehart in pursuance of a Warrant bearing date the 3<sup>d</sup> day of April 1792 Containing Four hundred thirty three Acres & one hundred & fifty three perches & the usual allowance of Six p<sup>er</sup> Cent for roads &c.

To Dan<sup>l</sup>. Brodhead Esq<sup>t</sup>.  
 Surveyor General. } Anty. Crothers D.S.

IN TESTIMONY that the above is a copy of the original remaining on file in the Department of Internal Affairs of Pennsylvania, made conformably to an Act of Assembly approved the 16th day of February, 1833, I have hereunto set my Hand and caused the Seal of said Department to be affixed at Harrisburg, this twenty-seventh day of August 1906

*Leach Brown*  
 Secretary of Internal Affairs.